

FENCE GATE ASSEMBLIES

CATALOG #	JUMPER BOND SIZE	GATE POST NOMINAL SIZE	GATE FRAME NOMINAL SIZE	LEFT HAND RIGHT HAND
38-6356-††	4/0 W/C	1 1/2" TO 2"	3/4" TO 1 1/4"	LEFT HAND
38-7356-††				RIGHT HAND
38-6357-††	4/0 W/C	2 1/2" TO 3"	3/4" TO 1 1/4"	LEFT HAND
38-7357-††				RIGHT HAND
38-6358-††	4/0 W/C	2 1/2" TO 3"	1 1/2" TO 2"	LEFT HAND
38-7358-††				RIGHT HAND
38-6359-††	4/0 W/C	3 1/2" TO 4"	3/4" TO 1 1/4"	LEFT HAND
38-7359-††				RIGHT HAND
38-6360-††	4/0 W/C	3 1/2" TO 4"	1 1/2" TO 2"	LEFT HAND
38-7360-††				RIGHT HAND
38-6902-††	4/0 W/C	5" TO 6"	3/4" TO 1 1/4"	LEFT HAND
38-6908-††				RIGHT HAND
38-6903-††	4/0 W/C	5" TO 6"	1 1/2" TO 2"	LEFT HAND
38-6909-††				RIGHT HAND
38-6361-††	2/0 W/C	1 1/2" TO 2"	3/4" TO 1 1/4"	LEFT HAND
38-7361-††				RIGHT HAND
38-6362-††	2/0 W/C	2 1/2" TO 3"	3/4" TO 1 1/4"	LEFT HAND
38-7362-††				RIGHT HAND
38-6363-††	2/0 W/C	2 1/2" TO 3"	1 1/2" TO 2"	LEFT HAND
38-7363-††				RIGHT HAND
38-6364-††	2/0 W/C	3 1/2" TO 4"	3/4" TO 1 1/4"	LEFT HAND
38-7364-††				RIGHT HAND
38-6365-††	2/0 W/C	3 1/2" TO 4"	1 1/2" TO 2"	LEFT HAND
38-7365-††				RIGHT HAND
38-6904-††	2/0 W/C	5" TO 6"	3/4" TO 1 1/4"	LEFT HAND
38-6910-††				RIGHT HAND
38-6905-††	2/0 W/C	5" TO 6"	1 1/2" TO 2"	LEFT HAND
38-6911-††				RIGHT HAND
38-6366-††	#2 W/C	1 1/2" TO 2"	3/4" TO 1 1/4"	LEFT HAND
38-7366-††				RIGHT HAND
38-6367-††	#2 W/C	2 1/2" TO 3"	3/4" TO 1 1/4"	LEFT HAND
38-7367-††				RIGHT HAND
38-6368-††	#2 W/C	2 1/2" TO 3"	1 1/2" TO 2"	LEFT HAND
38-7368-††				RIGHT HAND
38-6369-††	#2 W/C	3 1/2" TO 4"	3/4" TO 1 1/4"	LEFT HAND
38-7369-††				RIGHT HAND
38-6370-††	#2 W/C	3 1/2" TO 4"	1 1/2" TO 2"	LEFT HAND
38-7370-††				RIGHT HAND
38-6906-††	#2 W/C	5" TO 6"	3/4" TO 1 1/4"	LEFT HAND
38-6912-††				RIGHT HAND
38-6907-††	#2 W/C	5" TO 6"	1 1/2" TO 2"	LEFT HAND
38-6913-††				RIGHT HAND

NOTES:

- ALL THE FENCE GATE ASSEMBLIES LISTED ON THIS SHEET HAVE FLEXIBLE JUMPERS THAT ARE 24" LG. FOR FLEXIBLE JUMPER LENGTHS OTHER THAN 24", CONTACT ENGINEERING.
- REPLACE † WITH THE APPROPRIATE CODE FROM CHART "A" AND ‡ FROM CHART "B". SEE EXAMPLES BELOW. FOR SIZES AND COMBINATIONS NOT LISTED, CONTACT ENGINEERING.

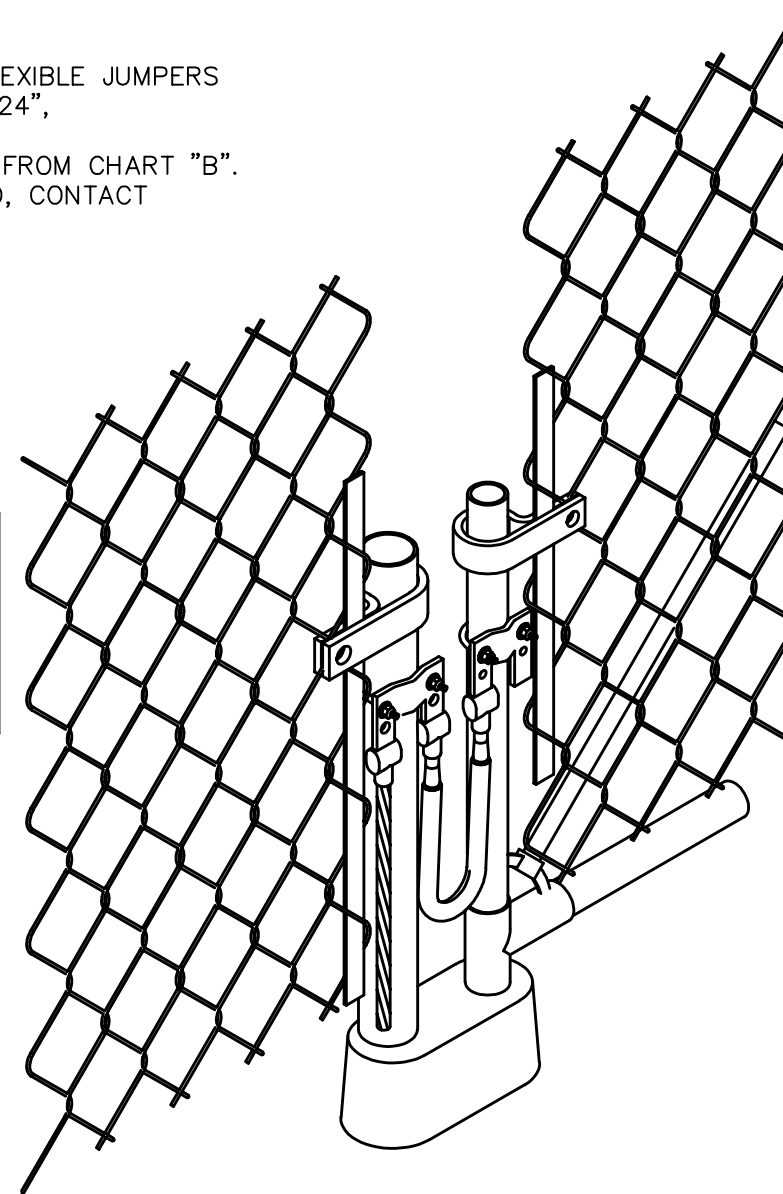
EXAMPLE
 38-6358-7F
 3" FENCE POST
 1 1/2" GATE POST
 FENCE POST IS ON LEFT
 4/0 WELDING CABLE JUMPER X 24" LG
 250 MCM GROUND CONDUCTOR X 48" LG

CHART "A" (†)

GROUND CONDUCTOR SIZE CODES	
1 = #2 SOL TINNED	
2 = #2 STR	
3 = #1 STR	
4 = 1/0 STR	
5 = 2/0 STR	
6 = 4/0 STR	
7 = 250 MCM	
8 = 300 MCM	
9 = 350 MCM	

CHART "B" (‡)

CONDUCTOR LENGTH CODES	
A = 6"	G = 10"
B = 12"	H = 96"
C = 18"	J = 60"
D = 24"	K = 72"
E = 36"	L = 144"
F = 48"	M = 30"



A	250707049683	TITLE BLOCK UPDATED	07/10/2025	NV
REV	ECN #	DESCRIPTION	DATE	INITIALS

REVISION HISTORY

TO ORDER thermOweld® PRODUCTS CALL UNITED STATES 1-800-558-1373 CANADA: 1-800-387-6487 FOR PRODUCT INFO: http://www.burndy.com	SIGNATURES			
	DRAWN BY	DATE	APPROVED BY	DATE
	G. GASSNER	10/14/11	MAC	10/14/11
MATERIAL				

thermOweld®



FENCE GATE ASSEMBLIES
 W/ FLEXIBLE JUMPER BOND AND DOWN CONDUCTOR
 38-6356-XX
 38-7370-XX

SIZE	DWG NO.	REV
B	CD-0820	A
SCALE	N.T.S.	SHEET 1 OF 1